



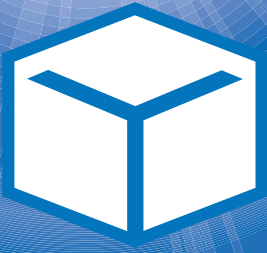
YASHIMA NBV Co.,Ltd.

SUSTAINABLE QUALITY – UNCHANGEABLE TRUST



PRODUCT CATALOG

**SOLAR BRACKETS
SYSTEM**



YASHIMA NBV Co.,Ltd.

SUSTAINABLE QUALITY – UNCHANGEABLE TRUST

*The Perfect Choice for All
Installation Conditions*

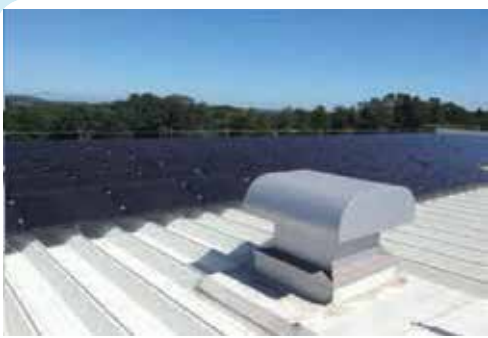


CONTENT

INSTALLATION PHOTOS	2
ALUMINUM FIELD STAND	4
ONE LEGGED STAND	9
CARPORT BRACKET	11
SOLAR SHARING BRACKET	13



INSTALLATION PHOTOS



√ **Compatible with many types of products:**
Compatible with panels from many different manufacturers.



√ **Can be installed in all types of terrain:**
Can be installed right on complex terrain such as slopes



√ **Highly durable and gentle materials:**
Easy conversion and installation

√ **Set up optimization time frame:**
Construction time and labor costs are significantly reduced





✓ High durability, resistant to all weather conditions

✓ Environmentally friendly: Recyclable



✓ Virtually no maintenance required

✓ 10 year warranty, usage time over 20 years



✓ Design, production and sales

✓ Comply with JIS standards and electrical technical interpretations

✓ Highly accurate structural calculations



ALUMINUM FIELD STAND



Product line: KS1 normal & KS2 economy

Product name: Aluminum outdoor rack

Materials: AL6005-T5 high strength aluminum,
SUS304 stainless steel

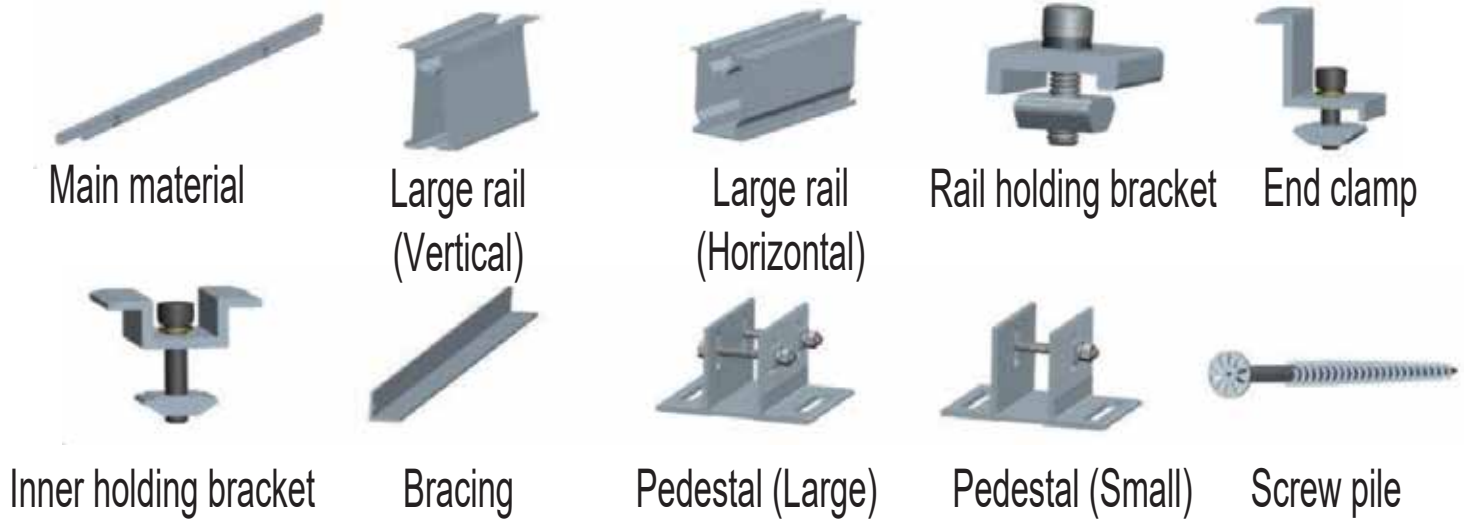
Foundation: screw pile or concrete

Frame structure: W type, N type, A type, T type

Advantages:

- Lightweight material: Easy to transport and install
- High corrosion resistance, suitable for saline areas.
- Optimize temporary assembly, reduce construction time and costs
- Environmentally friendly: highly durable, multi-terrain, recyclable

PARTS CONFIGURATIONS



INSTALLATION PROCESS

1. Foundation construction



2. Install the main rail



3. Install horizontal rail and bracket



4. Install the control panel



5. Install braces



Pedestal (concrete)



Pedestal (pile foundation)



Horizontal rail and main material



End holding bracket (horizontal)



Inside holding bracket (horizontal)



End holding bracket (vertical placement)



Inner holding bracket (Vertical placement)

CLASSIFICATION

*Depending on each terrain and installation conditions, our technical team will recommend the appropriate product for you.

Bolt horizontal stop KS1

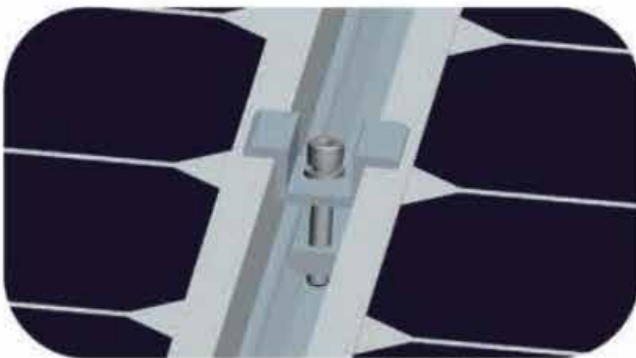


Bolt bottom stop KS2

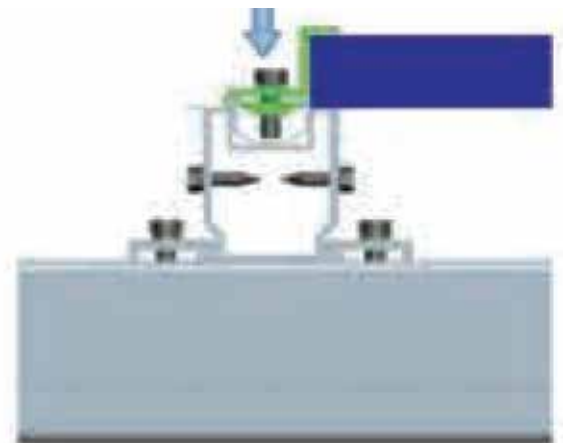
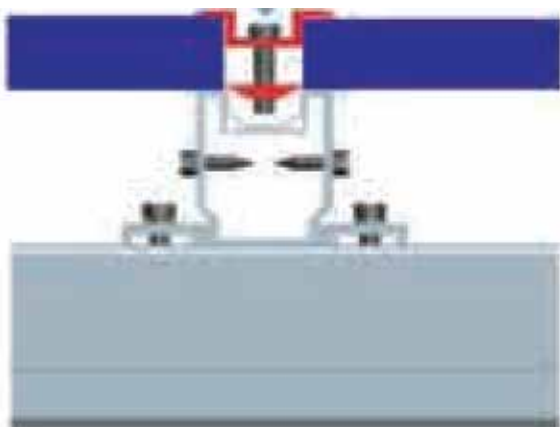
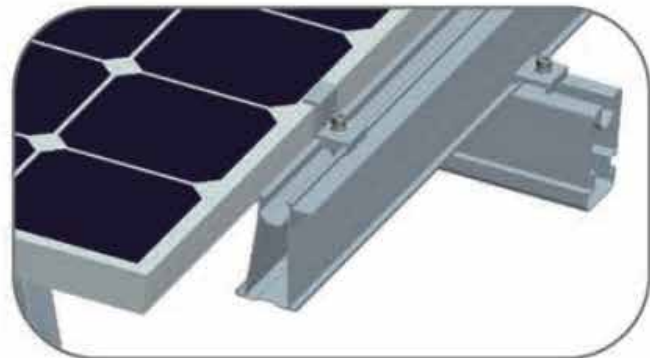


CLAMP

Middle fixing clamp



End fixing clamp





√ Material GB Q235B (Equivalent to JIS SS400)

√ 80 um thick hot-dip galvanized

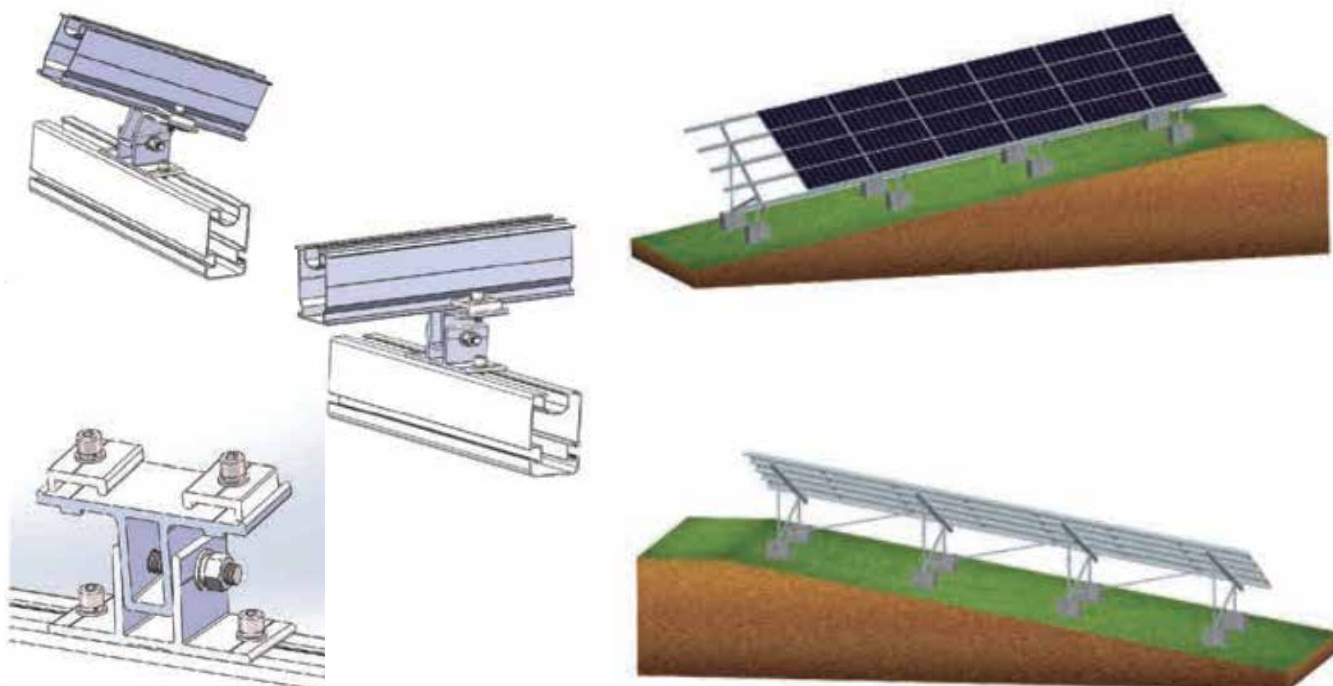
*Currently we are providing 4 types of screw piles, there are also other types, please contact us for more details.



Table of pile design standards

Sản phẩm	Đường kính (mm)	Độ dày (mm)	Chiều cao (mm)	Độ chịu lực của đất (N)							
				Nhóm đất sét (N)				Nhóm đất cát (N)			
				3	5	10	15	3	5	10	15
	φ 76	3-3.5	1200	6.5	11.6	24.6	37.5	8.4	12.2	21.9	31.5
	φ 76	3-3.5	1400	8.7	15.6	33.0	50.4	11.3	16.4	29.4	42.4
	φ 76	3-3.5	1600	10.1	18.2	38.4	58.6	13.1	19.1	34.2	49.3
	φ 76	3-3.5	1800	11.6	20.9	44.2	67.5	15.1	22.0	39.4	56.8
	φ 76	3-3.5	2000	13.5	24.3	51.3	78.3	17.5	25.5	45.7	65.8
	φ 76	3-3.5	2200	14.9	26.8	56.7	86.6	19.4	28.2	50.5	72.8
	φ 76	3-3.5	2500	17.0	30.7	64.9	99.0	22.2	32.3	57.8	83.3
	φ 76	3-3.5	3000	20.6	37.1	78.5	119.8	26.8	39.1	69.9	100.8

*In case it is necessary to adjust the tilt according to the slope of the installation site, we will use the tilt adjustment bracket.



√ Applicable to all surfaces with slopes from 0°-60°

REFERENCE PROJECT



- **Location:** Chiba prefecture, Japan
- **Installation type:** tilt-adjustable bracket



ONE LEGGED STAND (DRIVE-IN STYLE)



Product line: KS3 & KS4

Product name: Drive-in bracket

Materials: AL6005-T5 high strength aluminum,
Q235B steel pile

Foundation: fixed pile or type C pile

Advantages:

- Lightweight material: Easy to transport and install
- High corrosion resistance, suitable for saline areas.
- Optimize temporary assembly, reduce construction time and costs
- Environmentally friendly: highly durable, multi-terrain, recyclable
- Can install many types of complex and sloping shapes such as golf courses

PARTS CONFIGURATIONS



Main material



Large rail
(Vertical)



Large rail
(Horizontal)



Horizontal rail
(Horizontal installation)



End clamp



Inner holding
bracket



T-cap



C type steel



Rail fixing bracket



Cap 1



Cap 2



Shaped steel

INSTALLATION PROCESS

1. Pile driving



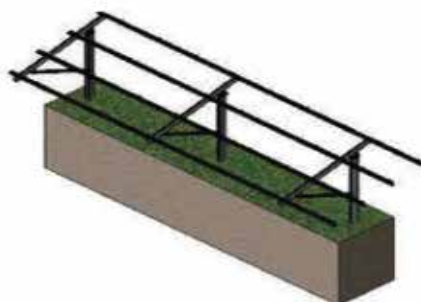
2. Install the T-cap



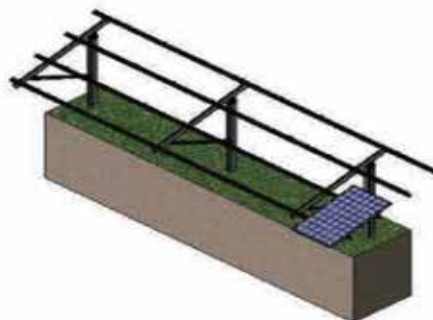
3. Install main rail



4. Install large rail



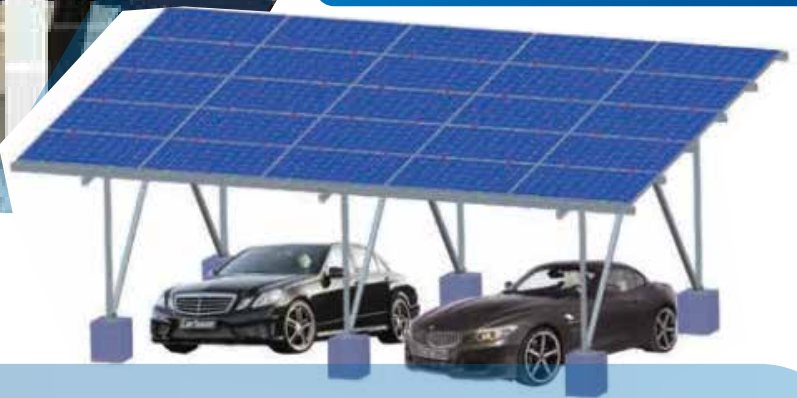
5. Install modules



6. Finish



CARPORT BRACKET



Product line: KS5

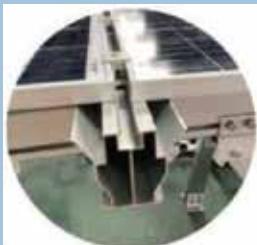
Product name: Carport bracket

Materials: AL6005-T5 high strength aluminum, SUS304 steel

Foundation: screw pile or concrete

Advantage:

- Lightweight material: Easy to transport and install
- High corrosion resistance, suitable for saline areas
- Height from 5-6 m suitable for many types of garages
- Environmentally friendly: highly durable, multi-terrain, recyclable
- Has rainwater drainage function and lower rail barrier



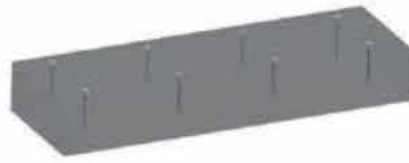
Drainage



Rail barrier

INSTALLATION PROCESS

1. Foundation construction



2. Install the pedestal



3. Install main material



4. Install horizontal rails



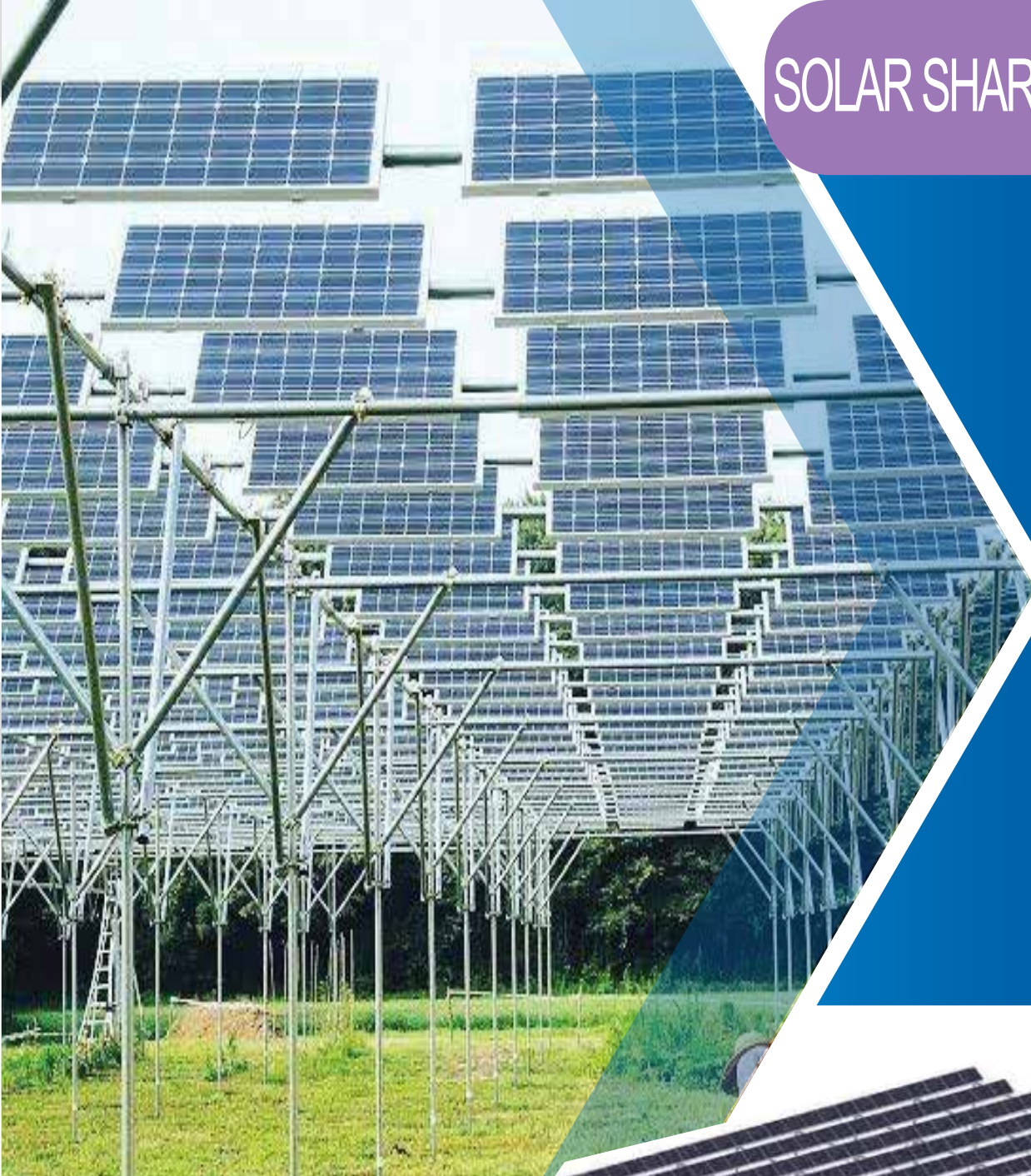
5. Install modules



REFERENCE PROJECT



SOLAR SHARING BRACKET



Product line: KS6

Product name: Solar Sharing bracket

Materials: AL6005-T5 high strength aluminum,
SUS304 steel

Foundation: screw pile or concrete

Advantages:

- Lightweight material: Easy to transport and install
- High corrosion resistance, suitable for saline areas.
- Maximum extension of 6m, ensuring space for machinery
- Environmentally friendly: highly durable, multi-terrain, recyclable

DESIGN TYPE 1

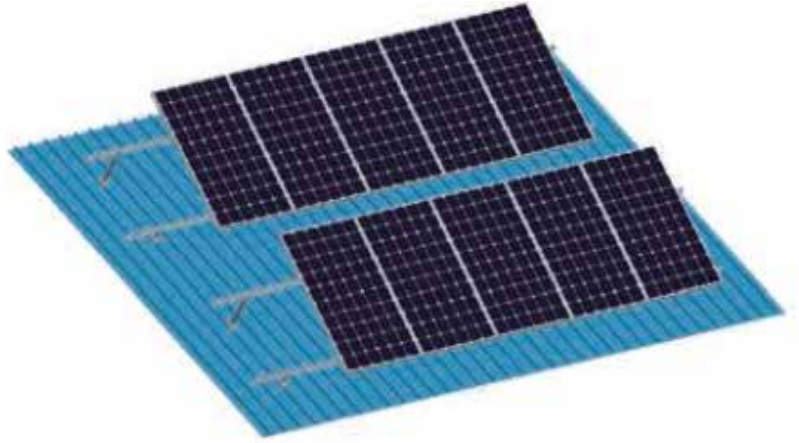


DESIGN TYPE 2



- ✓ Designed according to JIS C8955:2017 standards
- ✓ Resistant to wind, snow, and earthquakes
- ✓ Warranty for 10 years, usage time over 20 years

ADJUSTABLE STAND (ANGLE ADJUSTMENT)



- ✓ Designed according to JIS C8955:2017 standards
- ✓ Resistant to wind, snow, and earthquakes
- ✓ Warranty for 10 years, usage time over 20 years
- ✓ Used for flat roofs and roofs with small tilt angles
- ✓ Tilt angle adjustment: 10°~15°, 15°~30°, 30°~60°

ACCESSORIES



Front stand



Back stand



Rail



Bolt set



End clamp



**Inner holding
metal fittings**



**Rail connection
material**



**Gripping metal
fittings**

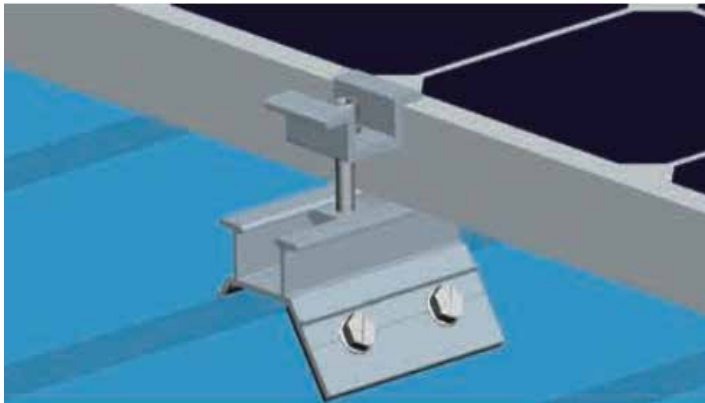
FOLDED PLATE ROOF FRAME



- ✓ Designed according to JIS C8955:2017 standards
- ✓ Resistant to wind, snow, and earthquakes
- ✓ Warranty for 10 years, usage time over 20 years



Direct attachment method



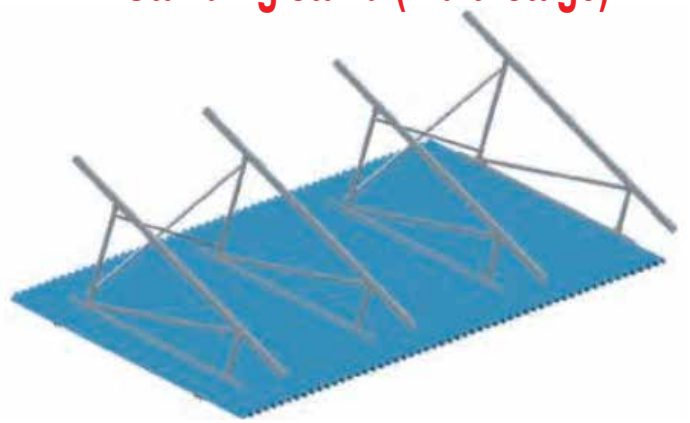
Rack construction method (with rails)



Standing stand (triangular shelf)



Standing stand (multi-stage)



- ✓ Designed according to JIS C8955:2017 standards
- ✓ Resistant to wind, snow, and earthquakes
- ✓ Warranty for 10 years, usage time over 20 years



ACCESSORIES



Rail



Rail connection material



Roof hawk



Inner holding metal fittings



End clamp



Screw





OFFICE

📍 170, No.5 Street, Binh Tri Dong B Ward, Binh Tan District, Ho Chi Minh City, Viet Nam

☎ (+84) 90 2820 517

✉ s-furuka@yashima-vn.com

FACTORY

📍 Le Minh Xuan Industrial Park, B3a and B3b, Lot K1-2-5, Binh Chanh District, Ho Chi Minh City, Viet Nam

☎ (+84) 28 3620 7325

✉ s-furuka@yashima-vn.com

Follow us on:    



Scan me to visit